

Pressure reducing valve, direct operated

Type ZDR



H7750

- ▶ Size 6
- ▶ Component series 4X
- ▶ Maximum operating pressure 350 bar
- ▶ Maximum flow 50 l/min

Features

- ▶ Sandwich plate valve
- ▶ Porting pattern according to ISO 4401-03-02-0-05 (with or without locating hole)
- ▶ 4 pressure ratings
- ▶ 4 adjustment types, optionally:
 - Rotary knob
 - Bushing with hexagon and protective cap
 - Lockable rotary knob with scale
 - Rotary knob with scale
- ▶ Pressure reduction in channel A, B or channel P
- ▶ Check valve, optional (version "A" only)
- ▶ Corrosion-protected design

Contents

Features	1
Ordering code	2
Symbols	3
Dimensions	4, 5

Ordering code

01	02	03	04	05	06	07	08	09	10	11	12	13	14
Z	DR	6	D			-	4X	/		Y			*

01	Sandwich plate valve	Z
02	Pressure reducing valve	DR
03	Size 6	6
04	Direct operated	D
05	Pressure reduction in channel A②	A
	Pressure reduction in channel B②	B
	Pressure reduction in channel P①	P

Adjustment type

06	Rotary knob	1
	Sleeve with hexagon and protective cap ("J3" version without protective cap)	2
	Lockable rotary knob with scale	3 ¹⁾
	Rotary knob with scale	7
07	Component series 40 ... 49 (40 ... 49: unchanged installation and mounting dimensions)	4X
08	Secondary pressure up to 25 bar	25
	Secondary pressure up to 75 bar	75
	Secondary pressure up to 150 bar	150
	Secondary pressure up to 210 bar	210
	Secondary pressure up to 315 bar (only version "B", "P", and "2")	315
09	Pilot oil supply internal, pilot oil return external	Y
10	With check valve (only version "A")	no code
	Without check valve	M


Corrosion resistance

11	None	no code
	Improved corrosion protection (240 h salt spray test according to EN ISO 9227); (only version "2")	J3

Seal material

12	NBR seals	no code
	FKM seals	V
	Observe compatibility of seals with hydraulic fluid used.	
13	Without locating hole	no code
	With locating hole	/60 ²⁾
	With locating hole and locking pin ISO 8752-3x8-St	/62
14	Further details in the plain text	

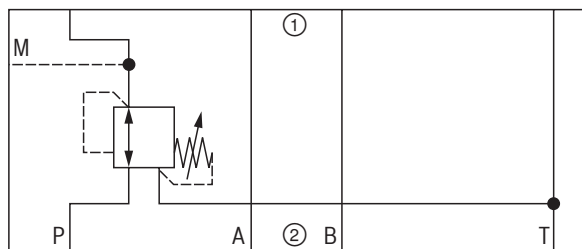
- ¹⁾ H-key with material no. **R900008158** is included in the scope of delivery.
- ²⁾ Locking pin ISO 8752-3x8-St, material no. **R900005694** (separate order)

 Notes:

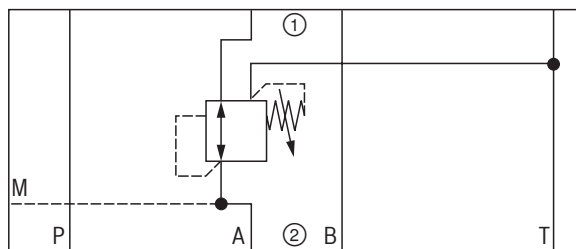
- ▶ For valve types for use in potentially explosive areas, refer to data sheet 07011.
- ▶ Preferred types and standard units are contained in the EPS (standard price list).

Symbols (1) = component side, (2) = plate side

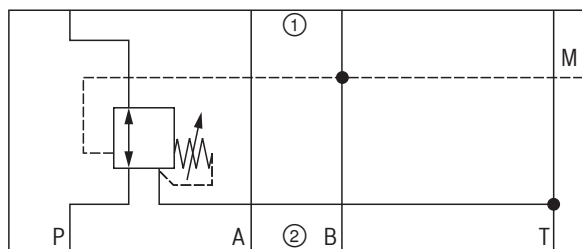
Version "P...YM"



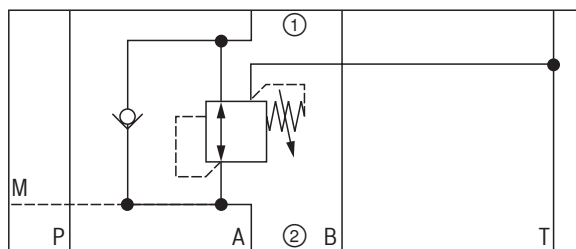
Version "A...YM"



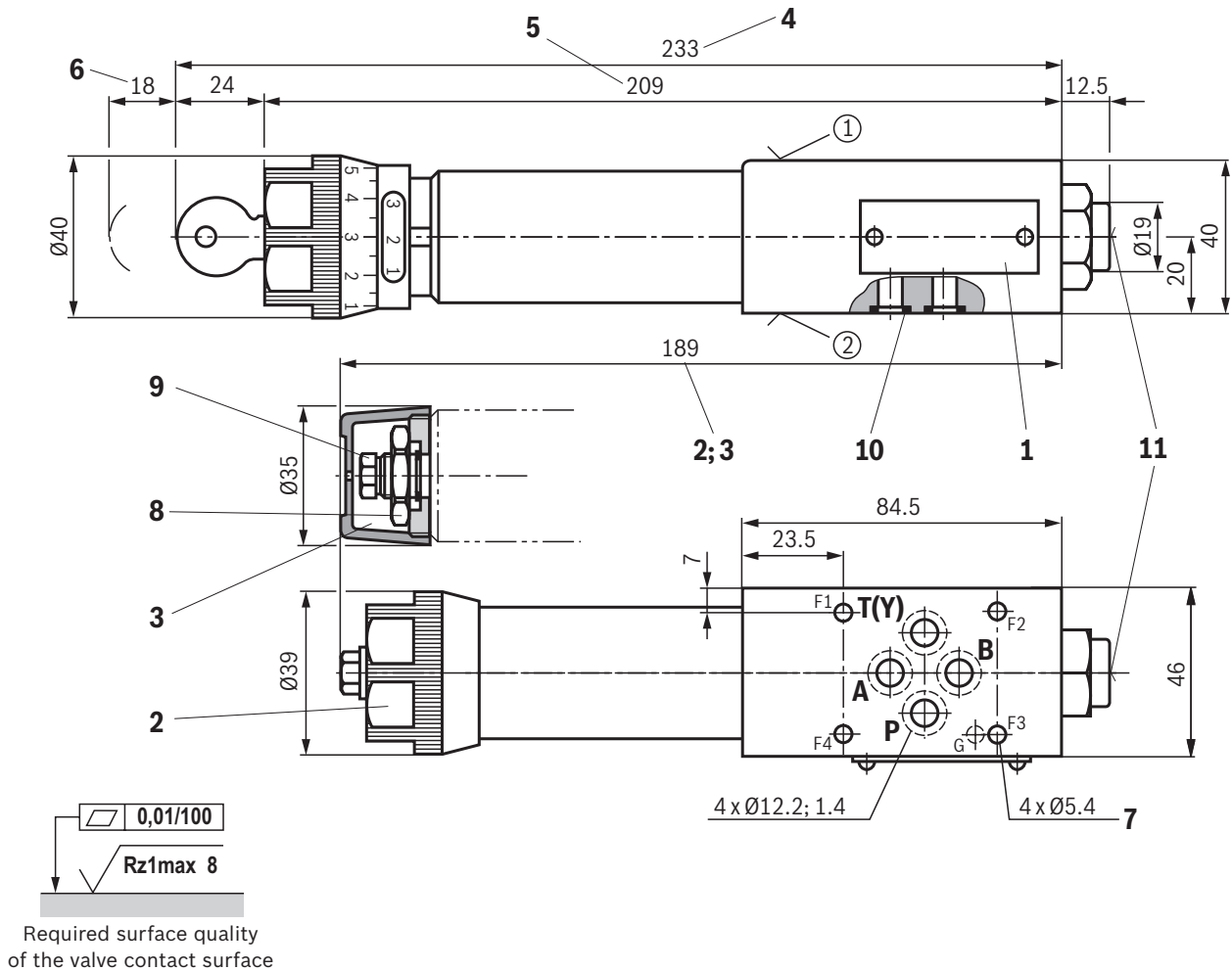
Version "B...YM"



Version "A...Y"



Dimensions: Version "B" and "P"
(dimensions in mm)



- ① component side – Porting pattern according to ISO 4401-03-02-0-05 (with or without locating hole); (**with** locating hole $\varnothing 3 \times 5$ mm deep)
- ② plate side – Porting pattern according to ISO 4401-03-02-0-05 (with or without locating hole); (**with** locating hole for locking pin ISO 8752-3x8-St; version "/60")

- 1 Name plate
- 2 Adjustment type "1"
- 3 Adjustment type "2"
- 4 Adjustment type "3"
- 5 Adjustment type "7"
- 6 Space required to remove the key
- 7 Valve mounting bores
- 8 Lock nut SW24
- 9 Hexagon, wrench size 10
- 10 Identical seal rings for ports A, B, P, T(Y)
- 11 Pressure gauge connection G1/4; 12 deep; internal hexagon SW6

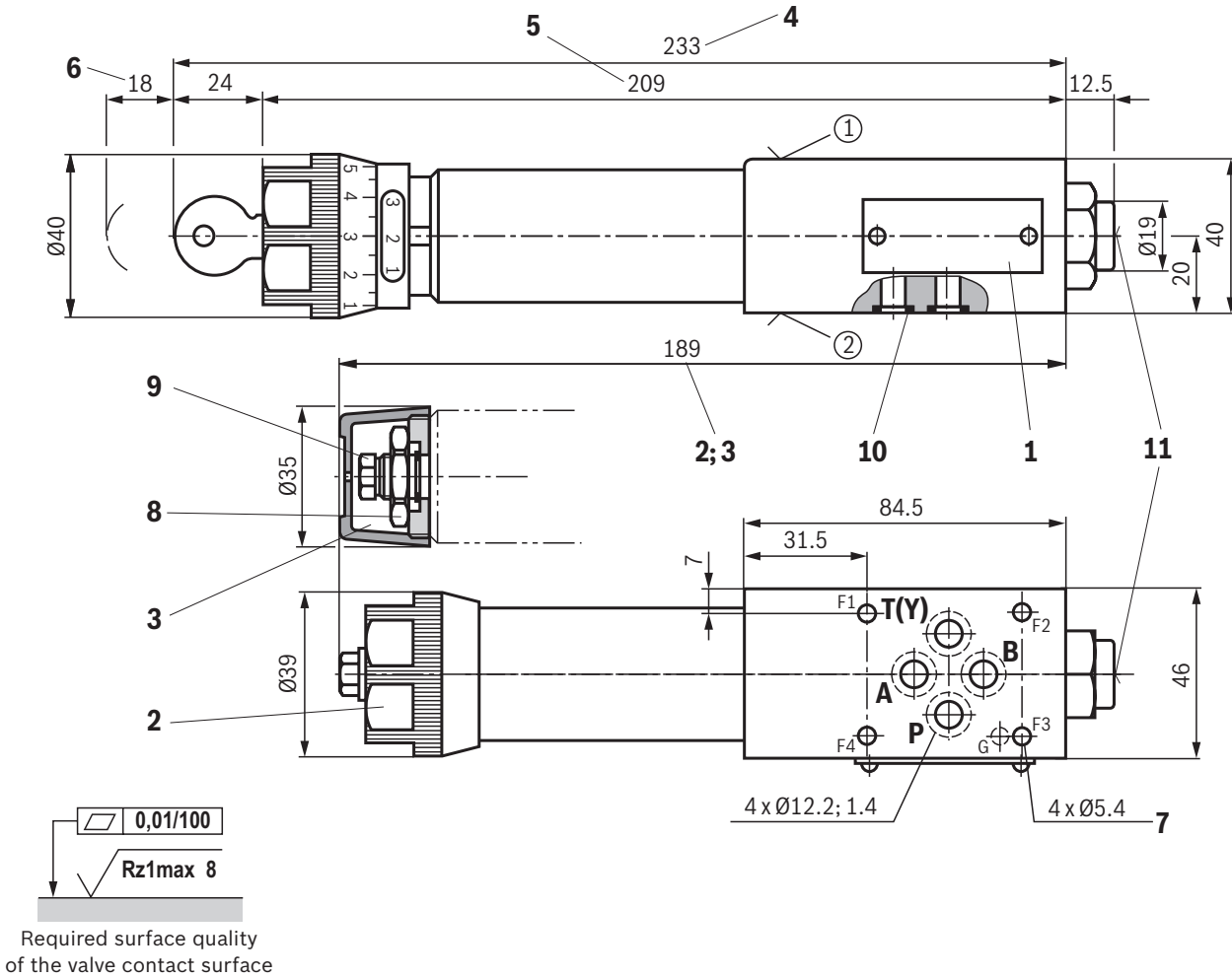
Valve mounting screws (separate order)

4 hexagon socket head cap screws ISO 4762 - M5 - 10.9

Notes:

- Length and tightening torque of the valve mounting screws must be calculated according to the components mounted under and over the sandwich plate valve.
- The dimensions are nominal dimensions which are subject to tolerances.

Dimensions: Version "A"
(dimensions in mm)



- ① component side – Porting pattern according to ISO 4401-03-02-0-05 (with or without locating hole); **(with** locating hole $\varnothing 3 \times 5$ mm deep)
- ② plate side – Porting pattern according to ISO 4401-03-02-0-05 (with or without locating hole); **(with** locating hole for locking pin ISO 8752-3x8-St; version "/60")

Valve mounting screws (separate order)
4 hexagon socket head cap screws ISO 4762 - M5 - 10.9

Notes:

- ▶ Length and tightening torque of the valve mounting screws must be calculated according to the components mounted under and over the sandwich plate valve.
- ▶ The dimensions are nominal dimensions which are subject to tolerances.

- 1 Name plate
- 2 Adjustment type "1"
- 3 Adjustment type "2"
- 4 Adjustment type "3"
- 5 Adjustment type "7"
- 6 Space required to remove the key
- 7 Valve mounting bores
- 8 Lock nut SW24
- 9 Hexagon, wrench size 10
- 10 Identical seal rings for ports A, B, P, T(Y)
- 11 Pressure gauge connection G1/4; 12 deep; internal hexagon SW6