



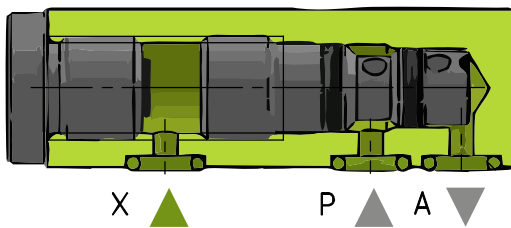
### ➔ Advantages:

- ✓ Screw-In and manifold mounting
- ✓ Simple counter contour
- ✓ Working pressure from 3-230 bar
- ✓ Completely sealed
- ✓ For hydraulic and pneumatic use
- ✓ Also repeatedly mountable



### Description

#### Operating principle



These pilot operated check valves are available in a screw-in (G1/4) and manifold mounting (flange) version.

The valves block against the screw-in direction (A->P). What means, when the pressurization is aborded, the set pressure in the channel A is maintained.

With pilot pressure at X, the valve can be opened against the reverse direction and the media return from A->P is guaranteed.

### Note

#### Generally:

The installation dimensions and tolerances must be observed.

The maximum permissible flow rates should not be exceeded.

The maximum pressure should not be exceeded even with pressure peaks. This is especially necessary for sudden load in the direction of flow e.g. in accumulator circuits.

#### Mounting:

The screw-in valve must be completely screwed in until the stop on the front side.

The insert dimensions must be checked. The screw-in valve must be mounted with the specified hexagon socket WS9.

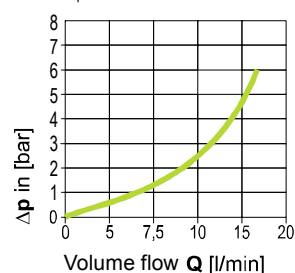
Even in softer materials such as aluminum, both valves can be used.

### Data

Properties	
Opening ratio	1:6
Max. volume flow hydraulic	14 l/min
Max. volume flow pneumatic	380 l/min
Mounting position	any
Temperature area	-30°C bis +80°C
Closing direction	against screw-in direction
Type	Screw-In/Flange
Min. opening pressure	1,2 bar
Min. working pressure	3 bar
Max. working pressure	230 bar
Material-Valve	Stainless steel
Sealing material	FKM
Manifold housing	Steel, brunished
Nominal diameter	ND 2

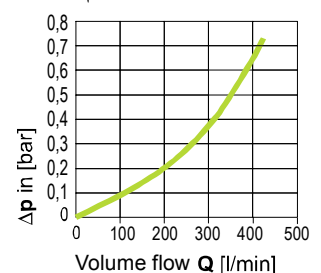
#### Pressure drop Hydraulic oil

$\Delta p$ -characteristic



#### Pressure drop Air

$\Delta p$ -characteristic



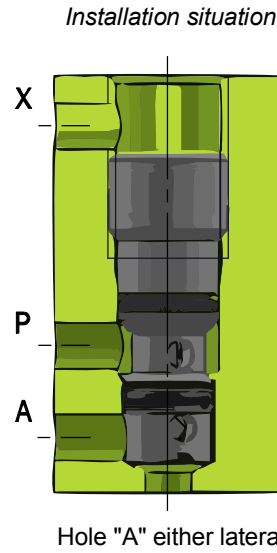
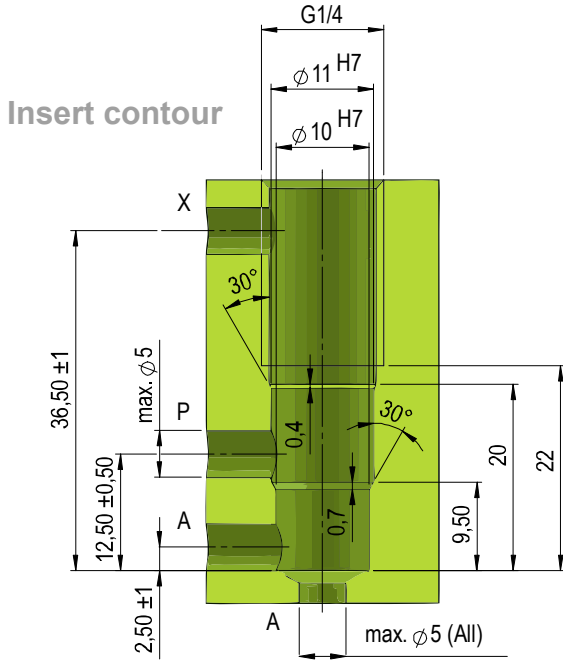
#### Contact

iNOSOL GmbH  
Frankfurter Str. 18  
35315 Homburg/Ohm (Germany)

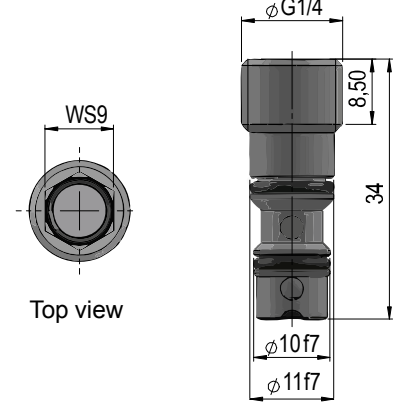
web: [www.inosol.solutions](http://www.inosol.solutions)  
email: [info@inosol.solutions](mailto:info@inosol.solutions)  
tel.: (+49) 6633 / 368 95 25

**Details**

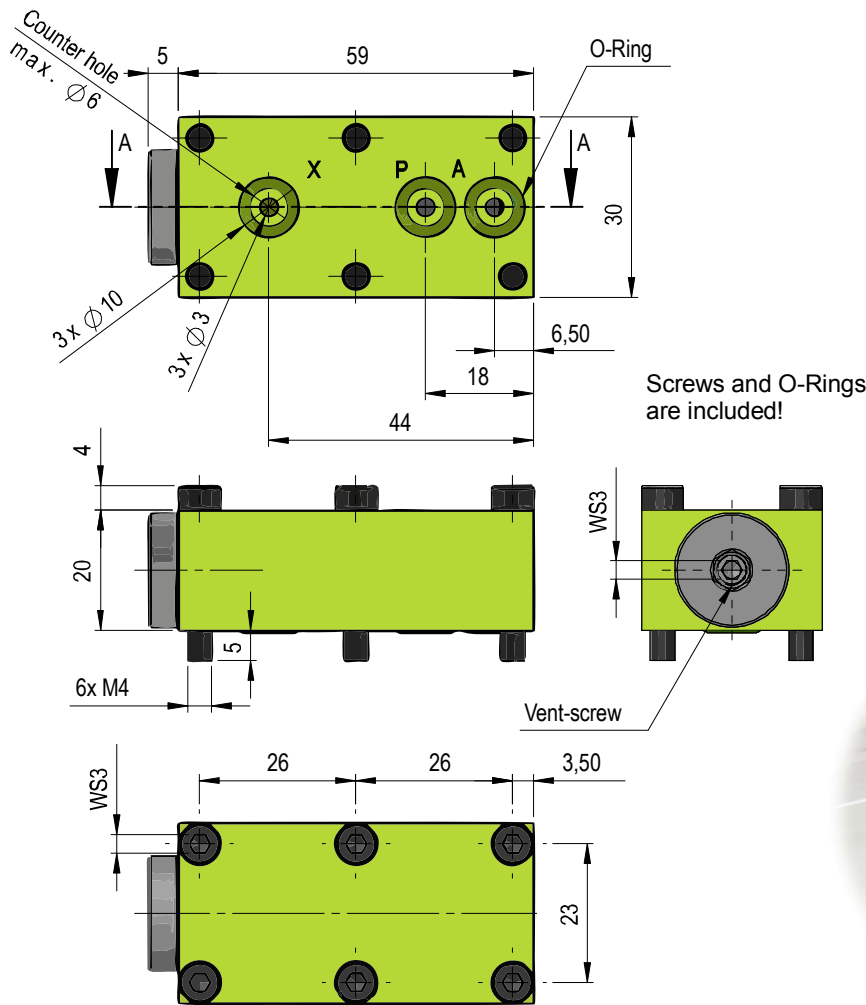
**Screw-In type**



**Part number:  
IPV14-002**



**Flange type**



*Application example*

