

Pressure reducing valve, direct operated

1/4

Type DR 6 DP

Size 6
Component series 5X
Maximum operating pressure 315 bar [4568 psi]
Maximum flow 60 l/min [15.9 US gpm]



H7743

Table of contents

Contents	Page
Features	1
Ordering code	2
Symbols	2
Unit dimensions	3, 4

Features

- For subplate mounting
- Porting pattern according to DIN 24340 form A
- Porting pattern according to ISO 4401-03-02-0-05 and NFPA T3.5.1 R2-2002 D03 (**with** locating hole)
- 4 adjustment types for pressure adjustment, optionally:
 - Rotary knob
 - Setscrew with hexagon and protective cap
 - Lockable rotary knob with scale
 - Rotary knob with scale
- 5 pressure ratings
- Check valve, optional

- More informatio:
 - Subplates

Data sheet 45052

Ordering code

DR 6 DP	-5X/	Y				*
---------	------	---	--	--	--	---

Pressure reducing valve, direct operated, size 6

Adjustment type

Rotary knob	= 1
Setscrew with hexagon and protective cap	= 2
Lockable rotary knob with scale	= 3 ¹⁾
Rotary knob with scale	= 7
Component series 50 to 59 (50 to 59: Unchanged installation and connection dimensions)	= 5X
Maximum secondary pressure 25 bar [362 psi]	= 25
Maximum secondary pressure 75 bar [1088 psi]	= 75
Maximum secondary pressure 150 bar [2175 psi]	= 150
Maximum secondary pressure 210 bar [3046 psi]	= 210
Maximum secondary pressure 315 bar [4568 psi]	= 315 ²⁾

Further details in the plain text

No code = Without locating hole
/60³⁾ = With locating hole
/62 = With locating hole and locating pin ISO 8752-3x8-St

Seal material

No code = NBR seals
V = FKM seals
 (other seals upon request)
 Attention!
 Observe compatibility of seals with hydraulic fluid used!

No code = With check valve
M = Without check valve

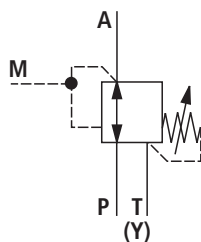
Y = Pilot oil supply internal, leakage oil discharge external

- ¹⁾ H-key with Material no. **R900008158** is included in the delivery.
- ²⁾ Only with adjustment type "2" and without check valve
- ³⁾ Locating pin ISO 8752-3x8-St, Material no. **R900005694** (separate order)

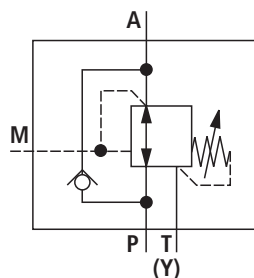
Standard types and standard units are contained in the EPS (standard price list).

Symbols

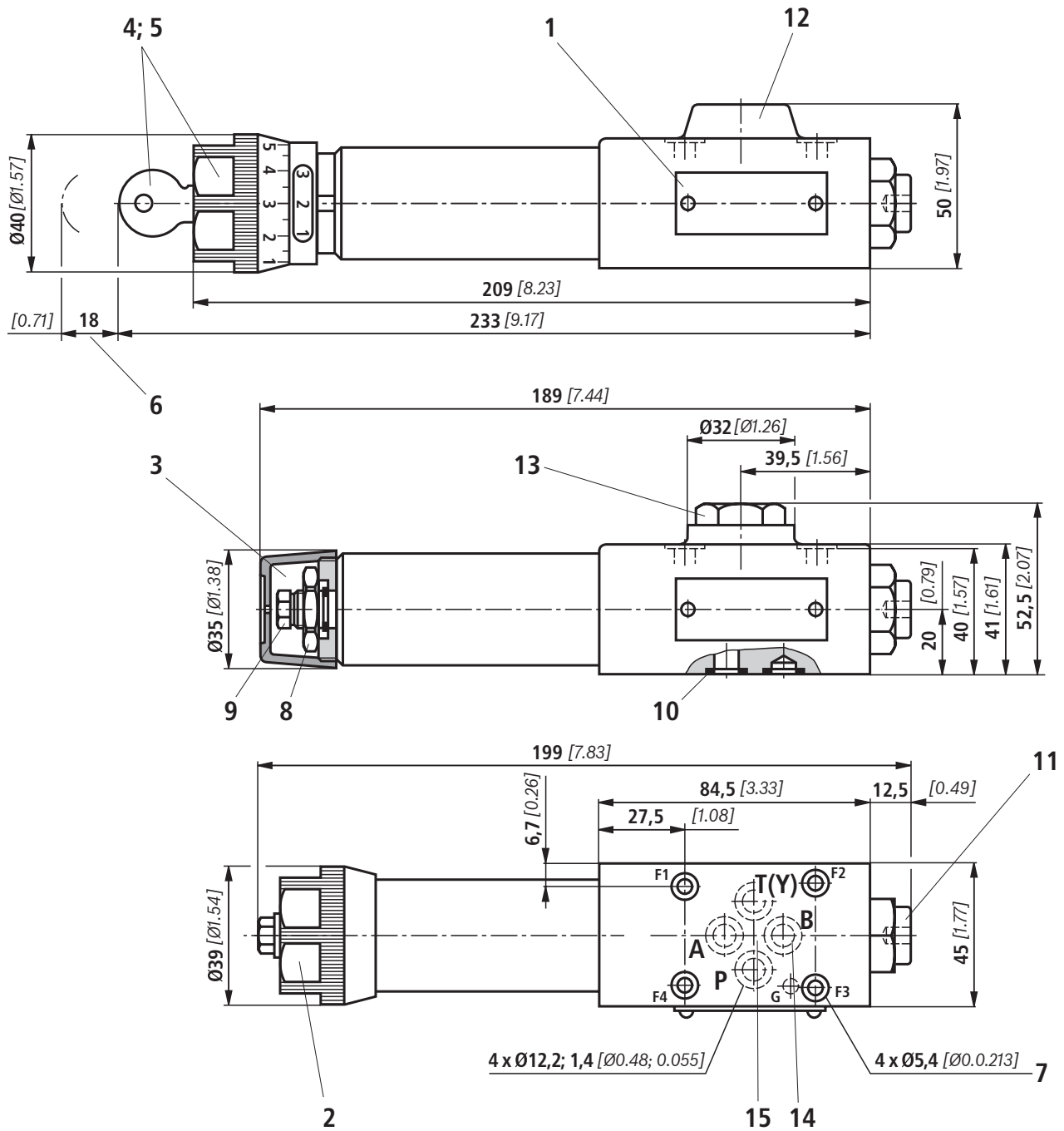
Version "M"
without check valve



"No code" version
with check valve



Unit dimensions (dimensions in mm [inch])



0,01/100
[0.0004/4.0]

Rzmax 4

Required surface quality of the valve mounting face

Unit dimensions

- 1 Name plate
- 2 Adjustment type "1"
- 3 Adjustment type "2"
- 4 Adjustment type "3"
- 5 Adjustment type "7"
- 6 Space required to remove the key
- 7 Valve mounting bores
- 8 Lock nut SW24
- 9 Hexagon SW10
- 10 Identical seal rings for ports A, B, P, T(Y)
- 11 Pressure gauge connection G1/4, 12 deep.
Internal hexagon SW6
- 12 Without check valve
- 13 With check valve
- 14 Port B without function
- 15 Porting pattern according to DIN 24340 form A
(**without** locating hole), or ISO 4401-03-02-0-05 and
NFPA T3.5.1 R2-2002 D03 (**with** locating hole for lo-
cating pin ISO 8752-3x8-St,
Material no. **R900005694**, separate order)

Subplates according to data sheet 45052 (separate order)

(**without** locating hole) G 341/01 (G1/4)

G 342/01 (G3/8)

G 502/01 (G1/2)

(**with** locating hole) G 341/60 (G1/4)

G 342/60 (G3/8)

G 502/60 (G1/2)

Valve mounting screws (separate order)

4 hexagon socket head cap screws metric

ISO 4762 - M5 x 50 - 10.9-f1Zn-240h-L

with friction coefficient $\mu_{\text{total}} = 0.09$ to 0.14 ,

Tightening torque $M_A = 7 \text{ Nm} \pm 10 \%$,

Material no. **R913000064**

4 hexagon socket head cap screws UNC

10-24 UNC x 2" (on request)